

SOVEREIGN II - VERSATILE LED EXIT SIGNS

Architectural Edgelit

Architects and Contractors don't always agree, now they can.

The timeless Sovereign edgelit exit sign has been enhanced to the Sovereign II and continues to set the standard for architectural appeal. Quality construction includes precision die cast aluminum housing with subtle lines and soft curves to appeal to the most discerning eye. New features include a surface mounting canopy that enables field conversion, or for added versatility can be ordered as a "SU" Surface universal for field selection. A unique ½" square tube pendant features seismic rated hang straight tilt, finished to match to the housing color selected. The unique crystal-clear exit legend with exceptional uniformity and can be field converted if required. Contractor friendly recessed backbox accommodates ceiling thicknesses up to 1 ¾". Sovereign II is available in many cost-effective configurations offering superlative quality, performance, and aesthetics.

Construction

- Contoured crystal clear laser formed edgelit lens
- Lens Panel is "Last-to-Assemble" snap-in for versatility and ease of installation
- Full size universal, self-adhesive Chevron arrows with template enable on-site configuration
- Available with a range of information signage or custom graphics
- Custom legends with white LED light source available to order
- Precision pressure die cast aluminum legend holder, trim and surface mount housing
- Quality sealed brushed aluminum finish, white, black, painted brass, painted bronze finishes are available, consult factory for custom finishes
- Hinged retaining springs eliminate exposed mounting hardware on recessed model
- Modular design provides ease of installation and matching configurations
- Low profile recessed housing is suitable for old or new work installations and is Type IC Rated
- Recessed ceiling back box features universal adjustable mounting brackets.
- Optional old work clips available for installation in existing ceilings
- Slimline low profile surface mount housing eliminates need for recessing box in wall mount applications

Power Consumption				
	Type	Volts	Max Watts	Power Factor
RED	AC Only	120 / 277	1.5	.70
RED	Battery Backup	120 / 277	2.5	.70
RED	Battery Backup with Remote	120 / 277	3.0	.73
GREEN	AC Only	120 / 277	2.3	.70
GREEN	Battery Backup	120 / 277	3.0	.76
GREEN	Battery Backup with Remote	120 / 277	4.0	.81



Electrical

- Diagnostic Battery Monitoring on all "EM" models
- Available with Master/Remote combinations
- Battery Diagnostic Circuit monitors battery status, detects cell failure and issues alert of reduced capacity and the need to replace battery
- Unique electronic driver circuit provides current control and protection ensuring optimum LED efficiency and life
- Universal 120/277 VAC field selectable input. All versions feature fully integral electronic components
- Premium long life high temperature rated, fused Nickel Cadmium battery
- Recessed AC Indicator and Test Switch
- Brownout sensing assures emergency illumination during periods of low line voltage
- Self-compensating solid state Constant Current Charger provides extended float life and rapid recharge
- Zero current LVCO ensures positive charge acceptance following extended discharge

Illumination

- Maintenance free LED Light source with 25+ years life expectancy
- Refractive light guide engineered to optimize LED utilization and illumination uniformity

Certification

- Approved for use in New York City calendar #48851
- UL Listed 3 hour emergency duration standard
- UL 924 Listed by Underwriters Laboratories and meets or exceeds all performance standards as required by NFPA 101, NFPA 70-NEC and OSHA
- California Energy Commission (CEC) Title 20 Compliant



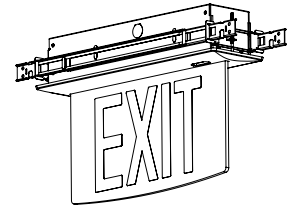
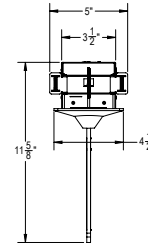
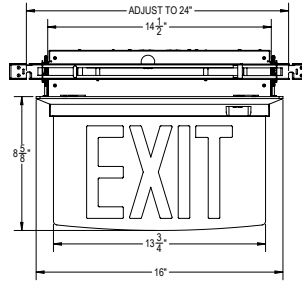
Warranty

- 5 year limited warranty

Sovereign II LED Exit Signs



Select options FT and FP



Recessed Ceiling Mount

ORDERING GUIDE – SOVII

Example: SOVII-EM-R-1W-BA-RC-UC-SD-FT-FP

Model	Operation	Legend Size/ Letter Color	Faces/ Background	Trim/ Housing Color	Mounting	Chevron Direction	Options
SOVII	AC AC Only 120/277 VAC	R RED Standard 6" EXIT	1C Single Face, Clear Background (standard)	BA Brushed Aluminum (standard)	Standard Mounting RC Recessed Ceiling Optional Mounting UP Back Box Pre Shipped	UC Field Installed Adhesive Chevron Indicators	DK Two Circuit Input – Specify Input Voltage (AC Models only)
	EM Battery Backup Emergency	G GREEN Stan- dard 6" EXIT NR RED 8" EXIT NG GREEN 8" EXIT	1M Single Face, Mirror Background 1W Single Face, White Background 2M Double Face, Mirror Background (Mirror simulates clear background for double face exits) 2W Double Face, White Background	WH White Finish BK Black Finish BR Brushed Brass Painted Finish CC Custom Color (specify) BZ Painted Bronze		AR Arrow Right <EXIT> AL Arrow Left <EXIT AA Double Arrow <EXIT> LR Arrow Left/Arrow Right <EXIT/EXIT> (Double Face units only)	SD Self-Test / Self- Diagnostic(EM models Only) IR Self-Diagnostics with Infrared remote Testing (EM models only) TLRT Infrared hand held Transmitter (order separately) VA Other Input Supply Voltage (Consult Factory) F Flash in Emergency Mode (EM Models) or continuous Flash in AC models FA Flash in AC and Emergency mode on 12-24V (AC or DC) normally-off fire alarm signal (Available for AC and EM models) FB FA Option including Buzzer FZ F Option including Buzzer DL Damp location listed FT Flat Trim for Recessed Ceiling Mount FP Flat Panel (no curve on panel bottom) EU Euro Legends (Consult factory for full range) IR Self-Diagnostics with Infrared remote Testing (EM models only) LL High/Low Level Master and Remote (available for AC and EM Models- Remote is Die Cast Exit Razor to match master)
SOVII						Factory installation of Chevrons is recommended for Double Face Signs	

Fill in fields from categories above and complete type and part number.

Type Number:

Full Part Number:

